

## STUDIO HAIR & MAKE UP

**FOR STUDIO HAIR:** All classes will have a Double Dutch braid into a ponytail. The ponytail can then turn into a bun for any class that requires it.

**\*\*PLEASE USE THE THINNER BRAID AS PER THE PICTURE ON THE RIGHT**

**NO BANGS**

**YouTube How to video:**

**<https://www.youtube.com/watch?v=KWTeKea0fO4>**

**FOR STUDIO MAKEUP:**

**THIS IS A SAMPLE AND DOES NOT HAVE TO BE EXACT**

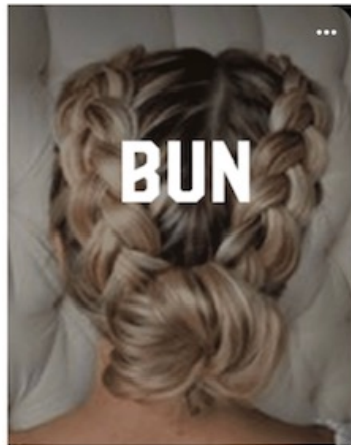
**EYESHADOW: NEUTRAL TONES**

**BLUSH: NEUTRAL OR PINK TONES**

**EYELINER: black**

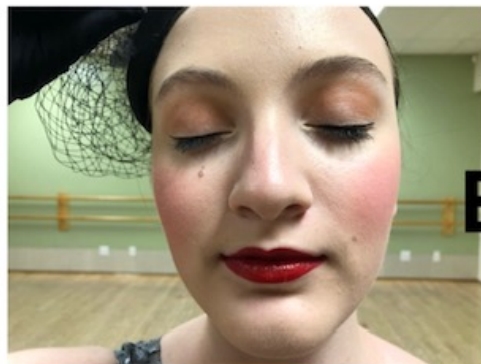
**MASCARA: black**

**LIP STICK: RIMMEL #800 (Berry Mischief) or REVLON #777 (Vampire Love) OR SOMETHING SIMILAR \*\*Both available at Shoppers Drug Mart**



**USE  
THE  
THINNER  
BRAIDS**

➔



**MAKEUP  
EXAMPLE**